

# Rittal – The System.

Faster – better – everywhere.

## Digital Brochure

ENCLOSURES

POWER DISTRIBUTION

CLIMATE CONTROL

IT INFRASTRUCTURE

SOFTWARE & SERVICES

FRIEDHELM LOH GROUP

[www.rittal.ca](http://www.rittal.ca)



# Rittal – The System.

Faster – better – everywhere.



# System Accessories

## Base/Plinth

Flex-Block Base/Plinth System .....	424
TS Base/Plinth .....	426
Base/Plinth .....	433

## Base

Base .....	435
------------	-----

## Walls

Sidewalls .....	450
Partition Walls .....	453
Interconnect Kit .....	458

## Baying Systems

Baying .....	460
--------------	-----

## Doors/Locks

Door Models .....	467
Expansion Accessories for TS Modular Front Design .....	469
Viewing Windows/Operating Panels .....	473
Lock Systems .....	478
Hinges .....	492
Door, External/Internal .....	493

## Roof/Wall Mounting

Roof .....	499
Wall Mounting .....	503

## Interior Fittings

Mounting Plates .....	507
Rail Systems .....	514
Assembly Components .....	533
Component Shelves .....	540
System Lights .....	545
EMC .....	551
Interior Fittings for Areas at Risk of Earthquake .....	554
Grounding .....	555

## Cable Routing

Cable Entry .....	561
Flange Plates .....	564
Cable Gland .....	568
Cable Gland .....	569
Cable Management .....	572
Cable Routing 19" .....	582

## 19" Installation System

Pivoting Frame .....	587
Accessories for Data Rack .....	591
Profile Rails .....	592
Slide Rails .....	596
19" Fittings .....	598
Patch Panels .....	603
Splicing Boxes .....	604

## Human/Machine Interface

Handles .....	605
External Mounting Accessories .....	607
Front Fittings .....	608
Keyboards, Supports and Drawers .....	610
Interfaces .....	617
Signal Pillars .....	619

## Technical Information

RittalXpress .....	622
CE/Grounding/HD/Model Numbers .....	623
Protection Categories .....	624
NEMA .....	625
Approvals/Equipment Grounding Conductor .....	627
Coating/Spray Finish .....	628



## Signal Pillars, LED Compact

### Advantages:

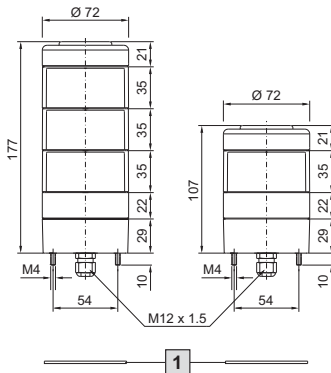
- Complete, ready-to-connect solution
- Minimal build height
- Extremely long service life of the LEDs (at least 70,000 h), therefore maintenance-free
- Minimal assembly work and warehousing costs

### Technical specifications:

- Operating voltage: 24 V AC/DC
- Electrical connection: Screw terminals
- Light (bulb): LED
- Angle of reflected beam: 3 x 120°
- Operating temperature: -4°F...158°F
- Flashing function: PLC controllable
- Cable entry: Metric cable gland M12 x 1.5 for cable diameter 3.0 – 6.5 mm

### Protection category IP to IEC 60 529:

- IP 65



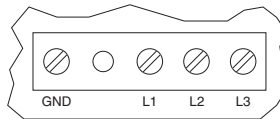
1 Seal

Version	Packs of	H inches (mm)	Model No.
3-stage, red, yellow, green	1 pc(s).	7 (177)	2372.100
1-stage, red	1 pc(s).	4 (107)	2372.130

### ! Also required:

- For wall mounting: Bracket for wall mounting, see page 620
- For conduit mounting/support arm systems: Connection adapter, see page 619
- Other mounting components, see page 620/621

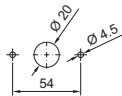
Connection diagram 2372.100/.130



GND - 0 V (Ground)

L1 - L3 - +24 V (DC) (LED light levels, from bottom to top, contacts that are not required remain free)

Mounting cut-out



## Connection Adapters

### for signal pillar, LED compact

For conduit mounting and mounting on support arm systems.

### Material:

- Plastic

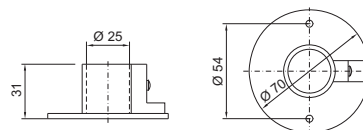
### Color:

- Black

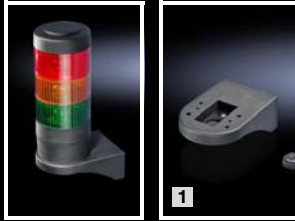
Packs of	Model No.
1 pc(s).	2372.120

### + Accessories:

- Mounting components for conduit mounting, see page 621
- Mounting components for support arm systems, see page 620



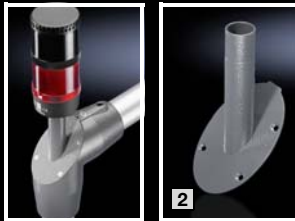
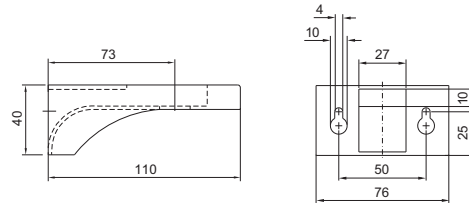
# Signal Pillars



## Mounting Components for wall/base mounting

Fig.	Mounting component	Color	Suitable for LED compact	Model No.
1	Bracket for wall mounting including rubber gland for concealed cable routing	black	■	2372.110

Bracket for wall mounting



## Mounting Components for support arm systems

To mount a signal pillar on the plastic cover of support arm components.

Fig.	Mounting component	Color	Suitable for LED compact	Model No.
2	for support arm system CP 40, steel – 90° Angle Piece 6501.140	RAL 7024 (graphite gray)	■	2375.030
3	for CP 60 support arm system – 90° Angle Adapter for CP 60 Support Arm Combination to CP 40 6206.640 – 90° Angle Coupling 6206.380 – 90° Angle Piece 6206.600 – Intermediate Joint 6206.620 – Wall Joint 6206.740 – Top-Mounted Joint 6206.700	RAL 7024 (graphite gray)	■	6206.900
4	for CP 120 support arm system – 90° Angle Coupling 6212.380 – 90° Angle Piece 6212.600 – Intermediate Joint 6212.620 – Wall Joint 6212.740 – Top-Mounted Joint 6212.700	RAL 7024 (graphite gray)	■	6212.900
	for CP 180 support arm system – 90° Angle Piece 6218.600 – Top-Mounted Joint 6218.700	RAL 7024 (graphite gray)	■	6212.900



### Also required:

- Connection adapter 2372.120, see page 619



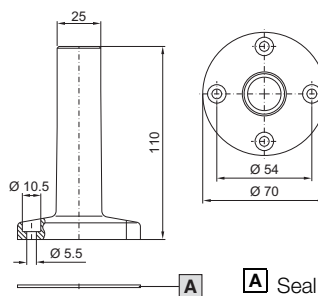
## Mounting Components for conduit mounting

Fig.	Mounting component	Color	Suitable for LED compact	Model No.
5	Base with integral conduit, Ø 25 mm, 110 mm long	black	■ <sup>1)</sup>	2374.000
6	Individual base	black	■	2374.010
7	Single pipe, 250 mm long	Aluminum	■ <sup>1)</sup>	2374.020
	Single pipe, 400 mm long	Aluminum	■ <sup>1)</sup>	2374.030
8	Angle bracket for pipe mounting	black	■	2374.050

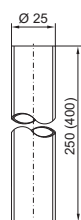
### ! Also required:

- <sup>1)</sup> Connection adapter 2372.120, see page 619

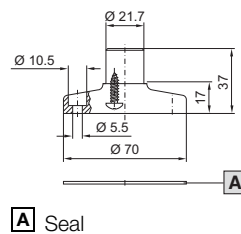
Base with integrated conduit



Individual conduit



Individual base, plastic



A Seal

Angle bracket for pipe mounting

